

# Tools and Accessories



# Contents

## Hand Tube Benders

---

F-20

## Tube Cutters

---

F-20

## Tube Deburring Tools

---

F-21

## Hydraulic Presetting Tools

---

F-21

## Manual Presetting Tools

---

F-22

## Gap Inspection Gauges

---

F-23

## Bulkhead Retainers

---

F-23

## Tee Wrenches

---

F-24

# Hand Tube Benders

## Features

- ⦿ For bending stainless steel and copper tubing from 1/4" to 1/2" and 6 mm to 16 mm outside diameter
- ⦿ Roll dies reduce bending force and tube ovality, as compared to conventional slide block design
- ⦿ 1° to 180° bending range

## Ordering Information

Ordering Number	Tube O.D.	Bend Radius
HTB-4S	1/4"	0.56"
HTB-4	1/4"	0.75"
HTB-5	5/16"	0.94"
HTB-6	3/8"	
HTB-8	1/2"	1.5"
HTB-6M	6 mm	15 mm
HTB-8M	8 mm	24 mm
HTB-10M	10 mm	
HTB-12M	12 mm	38 mm
HTB-14M-L	14 mm	56 mm
HTB-16M-L	16 mm	

The hand tube bender can not be used for super duplex 2507 tubing over 1/4" or for medium-pressure tubing.



# Tube Cutters

## Features

- ⦿ For cutting stainless steel, soft copper, and aluminum tubing from 1/8" to 2 5/8" and 3 to 65 mm outside diameter
- ⦿ Flare-out and work hardening of tube end is reduced

## Ordering Information

Ordering Number	Tube O.D.	Wheel Ordering Number
FTC-03	1/8" to 1" and 3 mm to 25 mm	FTC-03-RR
FTC-04	1/4" to 1 3/8" and 6 mm to 35 mm	FTCW-45
FTC-05	1/4" to 2 5/8" and 6 mm to 65 mm	



# Tube Deburring Tools

## Features

- ⦿ For deburring stainless steel, carbon steel, copper and aluminum tube ends
- ⦿ Steel blades for long life



## Ordering Information

Ordering Number	Deburring Position	Size	Tube Material
TDT-01	I.D.	less than 6 mm	Stainless Steel, Carbon Steel, Copper, Aluminum
TDT-03	O.D.	6 mm to 38 mm and 1/4" to 1 1/2"	Copper, Aluminum
	I.D.		
TDT-05	O.D.	6 mm to 36 mm and 1/4" to 1 1/4"	Stainless Steel, Carbon Steel
	I.D.		

# Hydraulic Presetting Tools

## Features

- ⦿ To preset ferrules onto tubing
- ⦿ For installing 1/2" to 2" and 12 mm to 50 mm carbon steel, stainless steel, and alloy steel tube fittings
- ⦿ Manually operated hydraulic pump, without requirement for power or compressed air
- ⦿ Made of high grade alloy steel for more durable and firmer usage
- ⦿ Flexible hose connection between the pump and jig to assure easy and comfortable operation
- ⦿ Reduce assembly and installation time and operator error
- ⦿ Fit neatly in a rugged plastic carrying case
- ⦿ Figure dimensions (L x W x H): 12.6 in. x 9.8 in. x 5.9 in. (the height of handle excluded)



## Ordering Information

### HPT-03 Series

Ordering Number	Tube O.D.
HPT-03M	12 mm, 14 mm, 15 mm, 16 mm, 18 mm, 20 mm, 22 mm, 25 mm
HPT-03F	1/2", 5/8", 3/4", 7/8", 1"
HPT-03C	Exclusive of die heads, please select the die heads you need from HPT-03 MF series die heads
HPT-03MF	Include HPT-03M and HPT-03F

### Die Heads for HPT-03MF Series

Ordering Number	Tube O.D.
HPT-ML12	12 mm
HPT-ML14	14 mm
HPT-ML15	15 mm
HPT-ML16	16 mm
HPT-ML18	18 mm
HPT-ML20	20 mm
HPT-ML22	22 mm
HPT-ML25	25 mm
HPT-FL8	1/2"
HPT-FL10	5/8"
HPT-FL12	3/4"
HPT-FL14	7/8"
HPT-FL16	1"

### HPT-05 Series

Ordering Number	Tube O.D.
HPT-05M	28 mm, 30 mm, 32 mm, 38 mm, 50 mm
HPT-05F	1-1/4", 1-1/2", 2"
HPT-05C	Exclusive of die heads, please select the die heads you need from HPT-05MF series die heads
HPT-05MF	Include HPT-05M and HPT-05F

### Die Heads for HPT-05MF Series

Ordering Number	Tube O.D.
HPT-ML28	28 mm
HPT-ML30	30 mm
HPT-ML32	32 mm
HPT-ML38	38 mm
HPT-ML50	50 mm
HPT-FL20	1-1/4"
HPT-FL24	1-1/2"
HPT-FL32	2"

## Manual Presetting Tools

### Features

For tube fitting installations in close quarters, the presetting tool can make installation easier and more reliable when paired with the table vice.

- ⦿ For installing 1/4" to 1" and 6 mm to 25 mm carbon steel, stainless steel and alloy steel tube fittings
- ⦿ High grade alloy used for clamp to make the presetting tool reliable and durable
- ⦿ Easy mounting to table vice
- ⦿ Wider and safer work condition



### Ordering Information

Ordering Number	Tube O.D.
MPT-6M	6 mm
MPT-8M	8 mm
MPT-10M	10 mm
MPT-12M	12 mm
MPT-14M	14 mm
MPT-15M	15 mm
MPT-16M	16 mm
MPT-18M	18 mm
MPT-20M	20 mm
MPT-22M	22 mm
MPT-25M	25 mm

Ordering Number	Tube O.D.
MPT-4	1/4"
MPT-6	3/8"
MPT-8	1/2"
MPT-10	5/8"
MPT-12	3/4"
MPT-14	7/8"
MPT-16	1"

FITOK gap inspection gauge can not be used to check the fittings preset by MPT series presetting tools.

# Gap Inspection Gauges

## Features

On initial installation of 6D tube fittings, the FITOK gap inspection gauge assures the installer or inspector that a fitting has been sufficiently tightened.

- For all metal fittings, sizes from 1/16" to 1" and 2 mm to 25 mm
- Simple and consistent operation



Individual Sizes Series

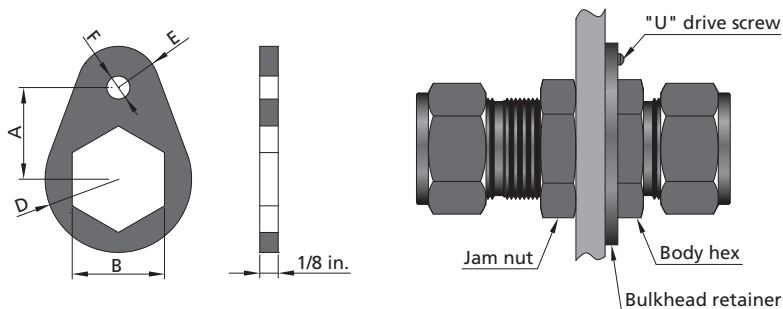


Multiple Sizes Series

## Ordering Information

Fitting Size		Ordering Number
in.	mm	
1/16	—	GIG-1
1/8	2, 3	GIG-2
3/16	4	GIG-3
1/4	6	GIG-4
5/16	8	GIG-5
3/8	—	GIG-6
—	10	GIG-10M
1/2	12	GIG-8
5/8	14, 15, 16	GIG-10
3/4	18	GIG-12
7/8	20, 22	GIG-14
1	25	GIG-16
1/4, 3/8, 1/2	6, 12	GIG-468
1/4, 1/2	6, 8, 10, 12	GIG-48

## Bulkhead Retainers



Bulkhead fitting installation utilizing bulkhead retainer

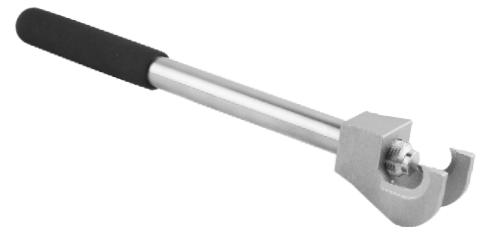
## Ordering Information

Fitting Size		Ordering Number	Dimensions, in.					"U" Drive Screw Size	Drill Number	
in.	mm		A	B	D	E	F			Drill Hole Dia
1/16	—	SS-BR-1	3/8	5/16	5/16	5/32	5/32	0.120	6-3/8	31
1/8	—	SS-BR-2	1/2	1/2	13/32	7/32				
3/16	3,4	SS-BR-3	9/16	9/16	15/32	1/4				
1/4	6	SS-BR-4	5/8	5/8	1/2	9/32				
5/16	—	SS-BR-5	11/16	11/16	9/16	5/16				
—	8	SS-BR-M8	11/16	18mm	9/16	5/16				
3/8	—	SS-BR-6	3/4	3/4	5/8	11/32				
—	10	SS-BR-M10	15/16	22mm	3/4	13/32	7/32	0.161	10-1/2	20
1/2	12	SS-BR-8	15/16	15/16	3/4	13/32				
5/8	14,15,16	SS-BR-10	1	1-1/16	13/16	13/32				
3/4	18	SS-BR-12	1-1/16	1-3/16	29/32	15/32				
7/8	—	SS-BR-14	1-1/8	1-5/16	1-1/32	17/32				
1	25	SS-BR-16	1-9/32	1-5/8	1-5/32	9/16				

## Tee Wrenches

### Features

- For the installation of union tees and crosses to hold fitting body firmly
- Same wrench for similar metric and fractional fitting sizes
- Small size, easy to carry



### Ordering Information

Fitting Size		Fitting Type		Ordering Number
in.	mm	Tee	Cross	
1/8	3	✓	✓	TWR-2
1/4	6	✓	✓	TWR-4
5/16, 3/8	8	✓	✓	TWR-6
1/2	12	✓	✓	TWR-8
/	10	✓	①	TWR-10M

① Use TWR-8 for crosses in this specification.

info@fitok.com  
www.fitok.com

FK-IC-GO-01-EN-240119