

## BLC4 - Solvent Purge Type

### Features

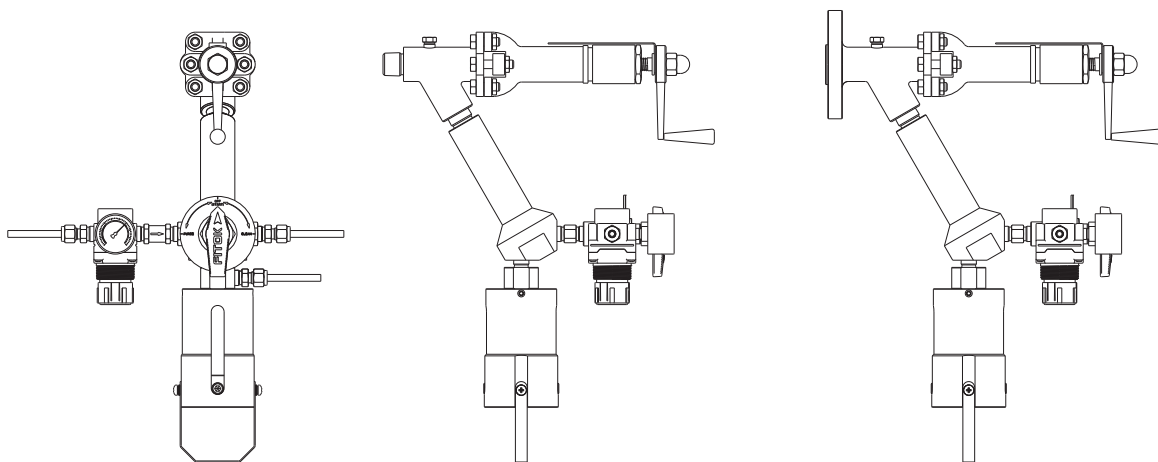
- ⦿ Sampling from vacuum, low or high pressure devices or process lines
- ⦿ Sampling with a piston valve to ensure zero dead volume
- ⦿ Sampling for highly viscous liquids
- ⦿ Needle purge and solvent purge

### Basic Configuration

<b>Wetted Material</b>	316 SS	
<b>Sleeve Assembly</b>	250 ml sleeve with bottle retaining clip	
<b>Needle Assembly</b>	Process/vent needle ID: 1.4 mm (0.06")	
<b>Sampling Valve</b>	Piston valve: PTFE seat Max. working pressure: 1500 psig @ 70°F (103 bar @ 20°C) Temperature range: 0°F to 450°F (-18°C to 232°C)	
<b>Purge Branch</b>	Nitrogen regulator	
	CV Series check valves, BF Series 3-way ball valves	
<b>Connections</b>	Process: 1/2" MNPT Vent/purge/solvent: 1/4" tube fitting	

Note: Products of other specifications are available upon request.

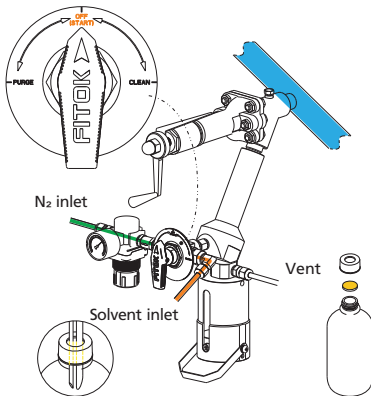
### Typical Installation Mode



## Operation

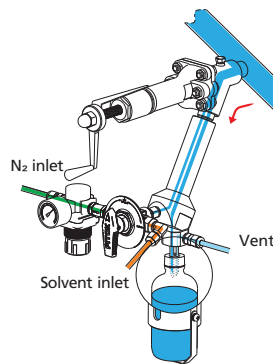
### 1 - Preparation

Place a new septum on the sample bottle. Insert the bottle with cap and septum into the sleeve until the septum is pierced by the needles. Swing down the bottle retaining clip.



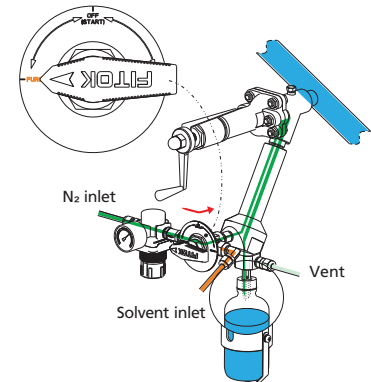
### 2 - Sampling

Open the piston valve, allowing the sample to flow into the bottle. When the required amount has been taken, close the piston valve.



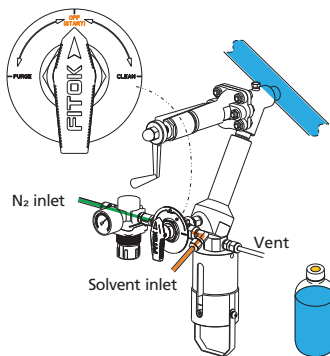
### 3 - Nitrogen Purge

Turn the handle to the "PURGE" position, allowing Nitrogen to force the residual sample from the system into the bottle.



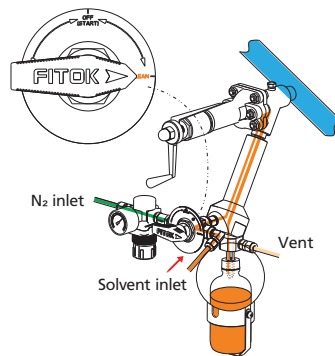
### 4 - Off

Turn the handle to the "OFF" position. Remove the bottle retaining clip and take out the bottle from the sleeve. The septum reseals automatically.



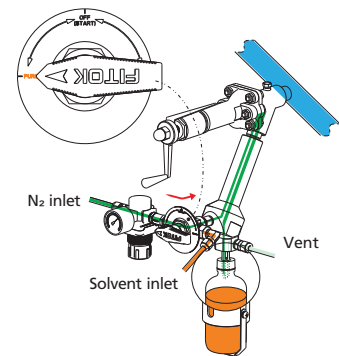
### 5 - Solvent Purge

Replace the bottle with a new one. Turn the handle to the "CLEAN" position, allowing the solvent to flow through the system into the bottle.



### 6 - Nitrogen Purge

Turn the handle to the "PURGE" position, allowing Nitrogen to force the residual solvent from the system into the sample bottle.



### 7 - Off

Turn the handle to the "OFF" position. Remove the bottle retaining clip and take out the bottle from the sleeve. The septum reseals automatically to complete solvent purging process.

