



## SERIES "ACC16CI" "PISTON ACCUMULATOR"

### OPERATION

The BWB "ACC16CI" Accumulator is a hydraulic / pneumatic assembly which holds nitrogen pre-charge on the gas side of the piston and receives and delivers hydraulic oil on the opposite side of the piston.

Pressure changes occur in a hydraulic system when the oil is subjected to rising or falling temperatures. There may also be a pressure drop due to leakage of hydraulic oils. Accumulators compensate for such pressure changes by delivering or receiving a small amount of hydraulic oils. In the event the main power source should fail or be stopped, the accumulator would act as an auxiliary power source, to maintain the pressure in the system.

Accumulators can be used in a pre-charge application for rapid oil flow when commanded by other components in a system.

Accumulators can be used as time delay devices for shutting down SDV's in some particular order.

Particular attention must be paid when determining how much nitrogen pre-charged pressure is used per application. Never pre-charge the gas side of the accumulator with oxygen or shop air.

If any further assistance is needed, please consult with BWB Controls.

### FEATURES

- Optional Pre-charge Gauge
- 17-4 Stainless Steel Construction
- Aluminum Piston
- Max Capacity: 16 in<sup>3</sup>
- Repairable (When repairing this device, you must release all pressures)

### SERVICE CLASSIFICATION

Standard service: Buna Seals

Temperature range available upon request

Special Service: O Ring compounds to Customer Requirements

### WEIGHT

13 lbs





**BWB Controls**  
 Telephone (985)-876-4117  
[info@bwbcontrols.com](mailto:info@bwbcontrols.com)  
 ISO 9001 Certified

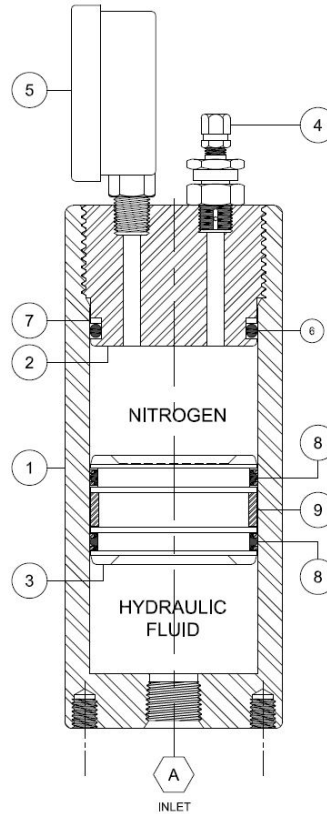


**INSTALLATION**

**PORT 'A'**

Inlet  
 1/2" FNPT  
 MAWP: 10,000 PSI  
 (689.48 Bar)

**FIGURE 1-1**



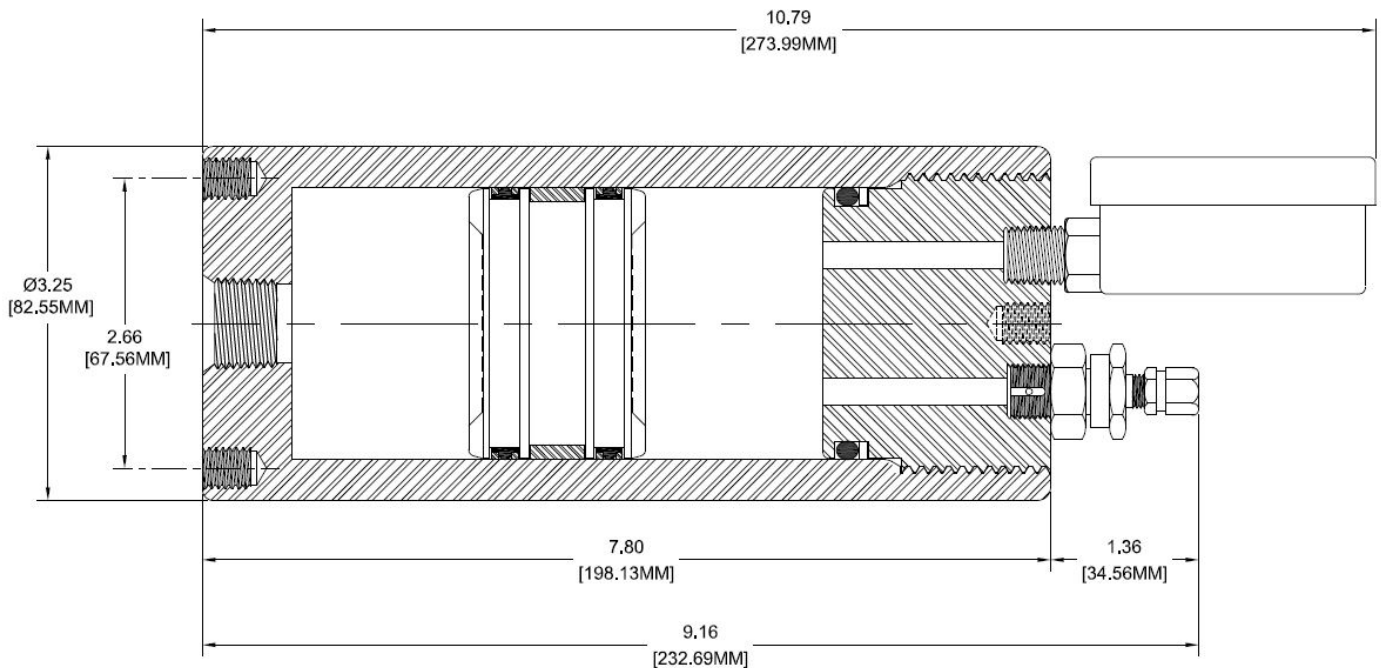
**ITEM DESCRIPTION**

- 1 HOUSING
- 2 CAP
- 3 PISTON
- 4 CHARGE VALVE
- 5 GAUGE (OPTIONAL)
- 6 O-RING
- 7 O-RING BACKUP
- 8 SEAL (QTY 2)
- 9 WEAR RING

**REPAIR KIT(S):**

CONTAINS ALL SEALS

**DIMENSIONS**



**Please note that Warranty and Repair Kit information on BWB Products are located on our website**

Designed and Manufactured using Safe Engineering Practices

[www.solutecmandiri.com](http://www.solutecmandiri.com)

5 February 2014