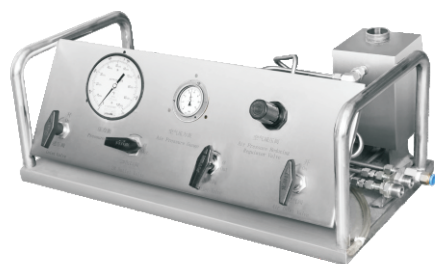


# Boosting System



**FITOK**

## Boosting System

### Profile

FITOK boosting system is a device for pressurizing gas or liquid. It can be used in pressure test, blast test, fatigue test, gas filling, high pressure flushing, chemical reagent filling, high pressure drive and other occasions.

### Features

- ⦿ Compact Design
- ⦿ Reliable Performance
- ⦿ Easy Operation
- ⦿ Custom Services
- ⦿ Automatic pressure maintaining after reaching design pressure
- ⦿ Automatically pressurize when lower than setting pressure

### Types

- ⦿ Drive mode: air driven and electric
- ⦿ Fluid medium: gas boosting and liquid boosting
- ⦿ Control mode: manual and automatic
- ⦿ Assembly method: portable, mobile and box-type

### System composition

<b>Drive Components</b>	Air-driven Booster Pump, Electric Booster Pump, Electric Piston Pump
<b>Valves and Fittings</b>	Ball Valve, Needle Valve, Check Valve, Safety Valve, Pneumatic Valve, Solenoid Valve, Filter, Fitting, Tube, Hose
<b>Instruments</b>	Pressure Gauge, Pressure Switch, Flow Meter, Liquid Level Gauge, Thermometer
<b>Control</b>	Control Box, PLC, Display
<b>Others</b>	Portable Frame, Mobile Frame, Box, Liquid Tank, Buffer Tank

### Technical Data

<b>Outlet Pressure</b>	Gas: Max.10150 psi (700 bar)    Liquid: Max.58000 psi (4000 bar)
<b>CV</b>	Gas: 22.65-175.53 l/min    Liquid: 0.21-7.07 l/min
<b>Wetted material</b>	316SS / PTFE / FKM
<b>Connection</b>	BSPP Thread, NPT Thread, UNF Thread, Ferrule, Quick Couplings

### Typical Applications

#### ⦿ Mobile Pneumatic Test Bench

FITOK mobile pneumatic test bench consists of nitrogen bottle, pressure regulator and pressure relief device. It uses nitrogen as the test medium and the equipment is integrated on the cart for easy movement in the factory or outdoor operation.



### ◎ Box-type Pneumatic Test Bench

FITOK box-type pneumatic test bench consists of booster pump, pressure control system and electronic control system. It uses nitrogen or compressed air as the air pressure test medium. When in use, after setting the pressure, testing process including pressurization, pressure maintaining and pressure relief can be completed automatically.



### ◎ Portable Hydraulic Test Bench

FITOK portable hydraulic test bench consists of booster pump and pressure control system. It uses water or oil as the test medium. The equipment is integrated on the portable frame, which is convenient for transportation in the factory or outdoor operation.



### ◎ Box-type Hydraulic Test Bench

FITOK box-type hydraulic test bench consists of booster pump, pressure control system and electronic control system. It uses water or oil as the test medium. When in use, after setting the pressure, testing process including pressurization, pressure maintaining and pressure relief can be completed automatically.



## Standard Equipments

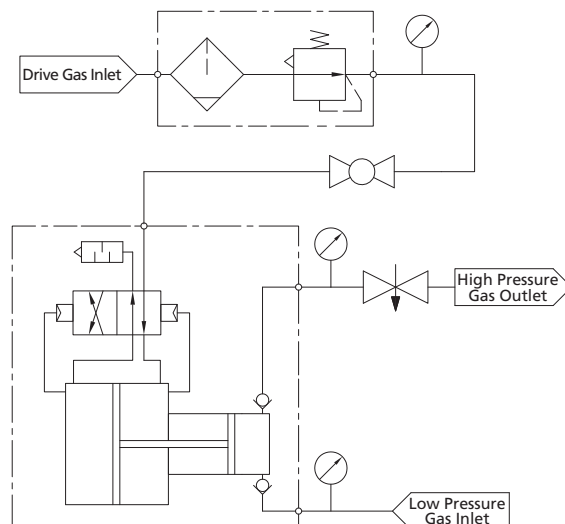
### ◎ GDG - Air-driven Gas Boosting System

#### Function

Compressed gas is used as the driving power to pressurize the low-pressure gas medium. It is suitable for pressure tests or occasions requiring high-pressure gas.

### Standard Construction

<b>Boosting Pump</b>	Boosting outlet pressure up to 10105 psi (700 bar)
<b>Drive Gas Line</b>	Filter regulator, Air Pressure Gauge, Ball Valve
<b>High Pressure Gas Line</b>	Needle Valve, Pressure Gauge
<b>Low Pressure Gas Line</b>	Pressure Gauge



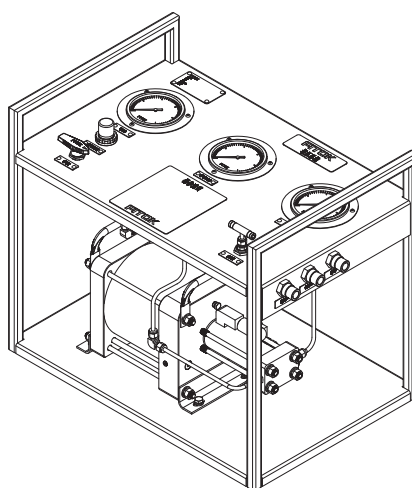
### Options

Options include safety valve in the drive gas line, safety valve in the high pressure gas line, filter on the low pressure gas inlet, and high pressure gas vent line.

### Technical Data

Part Number	Maximum Outlet Pressure		minimum Inlet Pressure		Maximum Drive Pressure		Discharge ml	Connection		
	bar	psi	bar	psi	bar	psi		Drive Gas Inlet	Low Pressure Gas Inlet	High Pressure Gas Outlet
GDG-8	80	1160	0	0	10	145	163.9	3/8 BSPP	3/8 BSPP	3/8 BSPP
GDG-15	150	2175	3.5	50	10	145	101.6	3/8 BSPP	1/4 BSPP	1/4 BSPP
GDG-30	300	4350	7	100	10	145	50.8	3/8 BSPP	1/4 BSPP	1/4 BSPP
GDG-50	500	7250	7	100	10	145	32.1	3/8 BSPP	1/4 BSPP	1/4 BSPP
GDG-70	700	10150	17	250	10	145	19.6	3/8 BSPP	1/4 BSPP	1/4 BSPP

Note: Automatic Boosting System available upon request



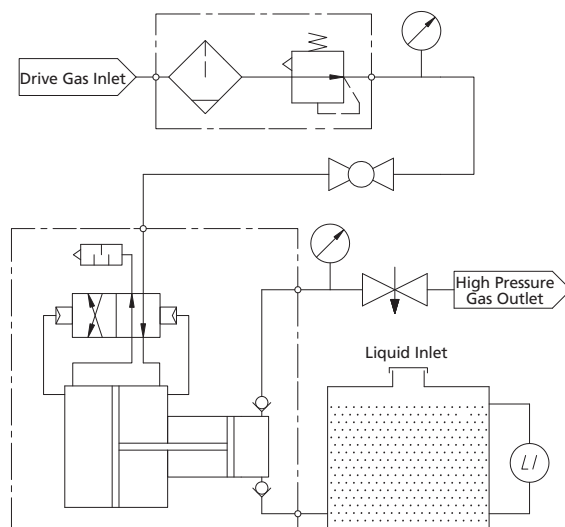
## © GDL - Air-driven Liquid Boosting System

### Function

Compressed gas is used as driving power to pressurize liquid media such as water or oil. It is suitable for pressure test or occasions requiring high-pressure liquid.

### Standard Construction

<b>Boosting Pump</b>	Boosting outlet pressure up to 4000 bar
<b>Drive Gas Line</b>	Filter Regulator, Air Pressure Gauge, Ball Valve
<b>High Pressure Liquid Line</b>	High Pressure Needle Valve, Pressure Gauge
<b>Liquid Tank</b>	10 L, with liquid level indicator



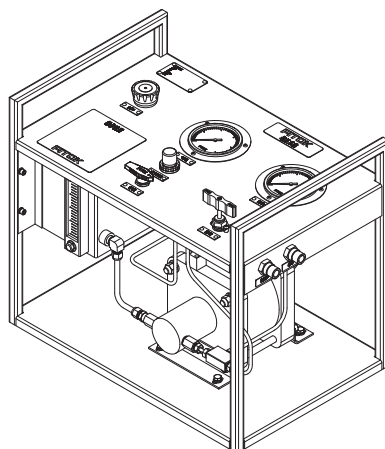
### Options

Options include safety valve in the drive gas line, safety valve in the high pressure gas line, filter on the low pressure gas inlet, and high pressure gas vent line or bigger liquid tank.

### Technical Data

Part Number	Pressure Ratio	Maximum Outlet Pressure		Maximum Drive Pressure		Discharge ml	CV l/min	Connection	
		bar	psi	bar	psi			Drive Gas Inlet	High Pressure Liquid Outlet
GDL-9	9	90	1305	10	145	14.7	7.07	3/8 BSPP	1/2 BSPP
GDL-28	28	280	4060	10	145	4.6	2.22	3/8 BSPP	3/8 BSPP
GDL-86	86	860	12470	10	145	1.5	0.72	3/8 BSPP	3/8 BSPP
GDL-220	220	2200	31900	10	145	0.6	0.28	3/8 BSPP	9/16-18 UNF (6FH4)
GDL-400	400	4000	58000	10	145	0.6	0.21	3/8 BSPP	9/16-18 UNF (6FH4)

Note: Automatic Boosting System available upon request



## FITOK Group

### FITOK GmbH

Spremlinger Landstr. 115, 63069 Offenbach am Main,  
Germany

Tel.: +49 69 8900 4498 Fax: +49 69 8900 4495

### FITOK (Wuhan) Incorporated

Zhongbai Yangluo Industrial Park, Hanshi Road,  
Xinzhou District, Wuhan 430415, China

Tel.: +86 27 8983 8988 Fax: +86 27 8983 8980

### FITOK (Suzhou) Metal Products Co., Ltd.

No. 29 Changsheng Road, Yangyuan Industrial Park,  
Xinzhuang Town, Changshu, Jiangsu 215562, China

Tel.: +86 512 5247 9001 Fax: +86 512 5247 9002

### FITOK, Inc.

13843 North Promenade Blvd., Suite 750, Stafford,  
Texas 77477, USA

Tel.: +1 281 888 0077 Fax: +1 281 582 4051

### FITOK (Shenzhen) Incorporated

No.164 Xinqu Village, Tiantou Community, Shijing Street,  
Pingshan District, Shenzhen 518118, China

Tel.: +86 755 2803 2500 Fax: +86 755 2803 2619

### FITOK Middle East Oil Equipment Trading LLC

Makateb Building, P.O. Box 185412, Airport Road, Deira,  
Dubai, UAE

Tel.: +971 4 2959 853 Fax: +971 4 2959 854

info@fitokgroup.com  
www.fitokgroup.com

